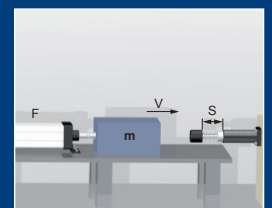


Deceleration cylinder

WM-ZG 3



2D / 3D CAD
Download



Benefits

Mounting:

- Installation position: any
- Recommendation: Vertical with the piston rod down

Surface protection:

- Housing: Zinc Plated

Design:

- Flexibility relating to Stroke, Deceleration Characteristic

Temperature:

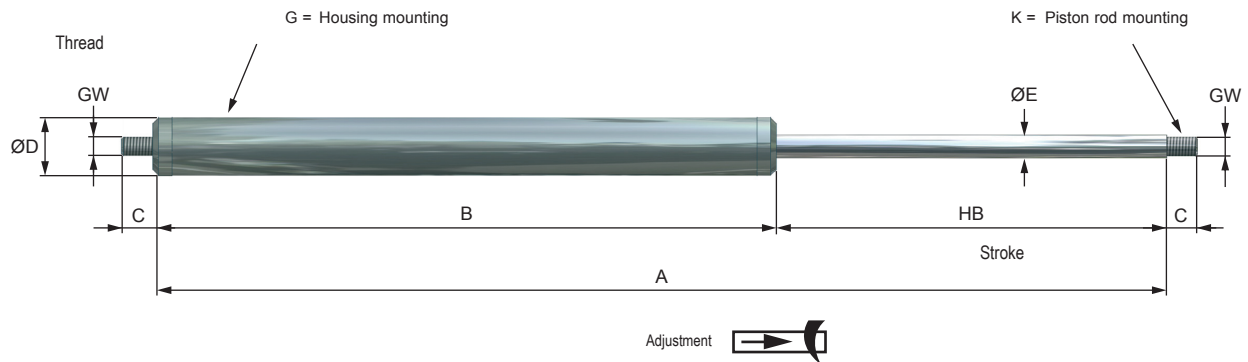
- Standard: -20°C - +80°C
- Lowtemperature: -50°C-...+60°C
- Hightemperature: 0°C-...+120°C

RoHS - conform:

- Directive 2002/95/EC

Extended Life Time:

- Special Seals + Oils
- Piston rod hard-chrome plated

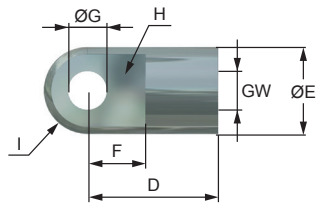


Design ZG without return stroke with volume compensation of piston rod through floating piston. Return force, see table
Installation position: any position

PERFORMANCE

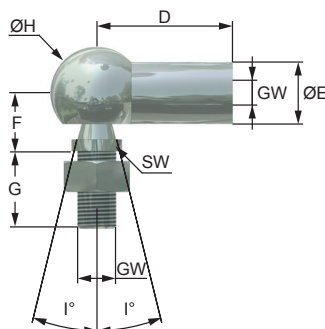
	Stroke	Max. compression force	Standard version Z		Return force					Weight (ZG)
			A	B		C	ø D	ø E	GW	
	mm	N	mm	mm	max. N	mm	mm	mm		kg
WM-ZG 3-100	100	10000	355	255	180	10	35	14	M 10	1,4
WM-ZG 3-200	200	10000	555	355	180	10	35	14	M 10	1,7
WM-ZG 3-300	300	10000	755	455	180	10	35	14	M 10	2,0
WM-ZG 3-400	400	10000	955	555	180	10	35	14	M 10	2,2
WM-ZG 3-500	500	8500	1155	655	180	10	35	14	M 10	2,3

1 Male rod clevis



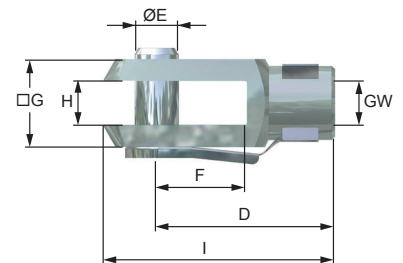
GW*	D	ØE	F	G	H	I
	mm	mm	mm	mm	mm	mm
M 10	27	18	12	8,1	10	9

2 Angle joint (DIN 71802)



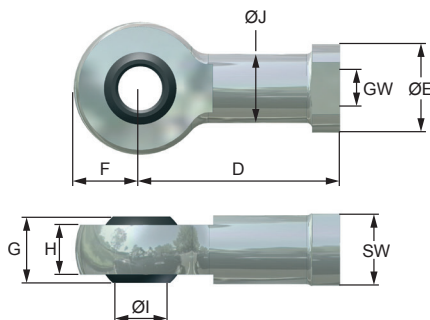
GW*	D	ØE	F	G	H	I	J	SW
	mm	mm	mm	mm	mm	mm	mm	mm
M 10	35	16	16	19	24	-	-	13

3 Female rod clevis (DIN 71752)



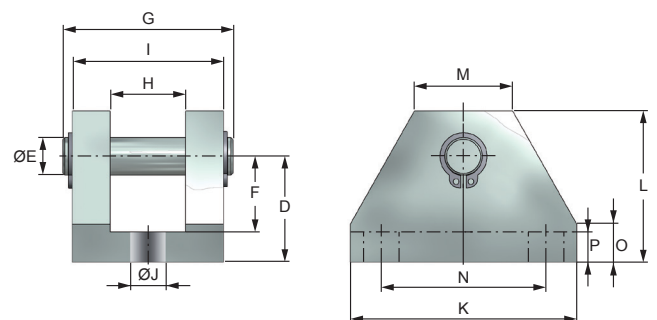
GW*	D	ØE	F	G	H	I
	mm	mm	mm	mm	mm	mm
M 10	40	10	20	20	10	52

4 Spherical end bearing (DIN 648, Series K, Series E on enquiry)



GW*	D	ØE	F	G	H	I	J	SW
	mm	mm	mm	mm	mm	mm	mm	mm
M 10	43	19	14	14	10,5	10	15	17

5 Clevis flange (only use in combination with spherical end bearing (4))



GW*	D	ØE	F	G	H	I	J	SW	K	L	M	N	O	P
	mm	mm	mm	mm	mm	mm	mm	mm	mm	mm	mm	mm	mm	mm
M 10	28	10	20	50	20	40	8,5	-	60	40	26	46	10	8

Ordering Information	
WM-ZG 3-100-K3G4-C	
WM	Weforma
ZG	Deceleration cylinder with volume compensation of the piston rod
3	Diameter: 35 mm
100	Stroke: 100 mm
K3	Piston rod mounting: female rod clevis
G4	Housing mounting: spherical end bearing
C	Typ of deceleration : A= Push, B= Pull, C= Push and Pull

Important information

General Information

Shock absorber, deceleration cylinders and speed controls may under no circumstances be welded, painted or provided with clamps.



The products must be protected against contamination, fluids and air pressure. We offer special solutions for these applications. deceleration cylinder should be assembled only with the fixture indicated in the catalogue.

When deceleration cylinders are used parallel the size of the model and the used degree of hardness / used adjustment has to be the same. The load has to be distributed equally. Upon the occurrence of vibrations and oscillation a written release by Weforma is required.

If the absorption should be insufficient, please contact Weforma or the respective representation.. Deceleration cylinders of the WM-ZG series are adjustable over the whole deceleration range. A fixed stop must be set in the end positions 1 - 1,5 mm before the end of the stroke. Ausführung WM-ZG; with volume compensation, As a result of the adjustment, the total length can change up to 8 mm. Before opening deceleration cylinders of the WM-ZG series the pressure must be let off. Do not drive in the final position under full load.

Adjustment:

Fixation of the piston rod in the extended position
adjustment of the deceleration by
turning the piston rod clockwise / counter clockwise
soft deceleration = rotating counter-clockwise
hard deceleration = rotating clockwise

Einbaulage: beliebig

