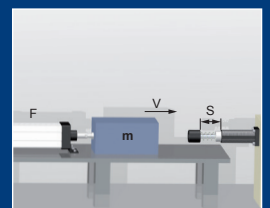


## Deceleration cylinder

WM-ZG 7

2D / 3D CAD  
Download



## Benefits

### **Mounting:**

- Installation position: any
- Recommendation: Vertical with the piston rod down

### **Surface protection:**

- Housing: Zinc Plated

### **Design:**

- Flexibility relating to Stroke, Deceleration Characteristic

### **Temperature:**

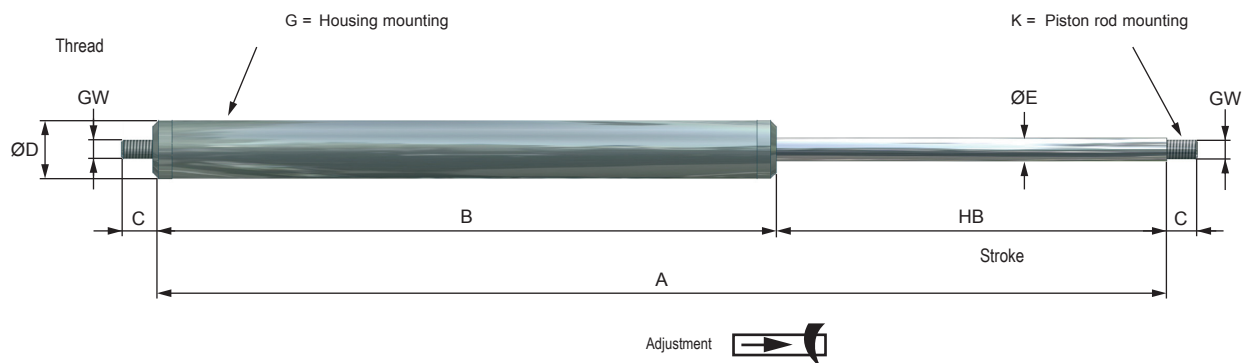
- Standard: -20°C - +80°C
- Lowtemperature: -50°C-...+60°C
- Hightemperature: 0°C-...+120°C

### **RoHS - conform:**

- Directive 2002/95/EC

### **Extended Life Time:**

- Special Seals + Oils
- Piston rod hard-chrome plated

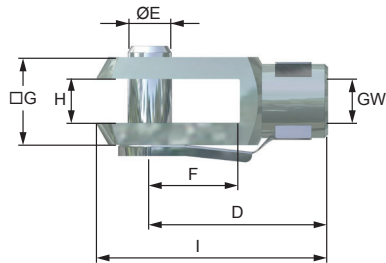


Design ZG without return stroke with volume compensation of piston rod through floating piston. Return force, see table  
Installation position: any position

## PERFORMANCE

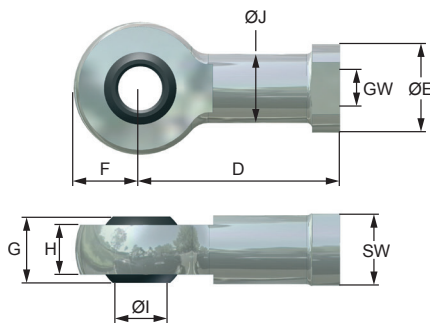
	Stroke	Max. compression force	Standard version Z		Return force	C	ø D	ø E	GW	Weight
			A	B						(ZG)
	mm	N	mm	mm	max. N	mm	mm	mm		kg
WM-ZG 7-100	100	52000	470	370	700	35	70	28	M 24x2	6,6
WM-ZG 7-200	200	52000	670	470	700	35	70	28	M 24x2	7,9
WM-ZG 7-300	300	52000	870	570	700	35	70	28	M 24x2	9,2
WM-ZG 7-400	400	52000	1070	670	700	35	70	28	M 24x2	10,4
WM-ZG 7-500	500	50000	1270	770	700	35	70	28	M 24x2	11,7

## 3 Female rod clevis (DIN 71752)



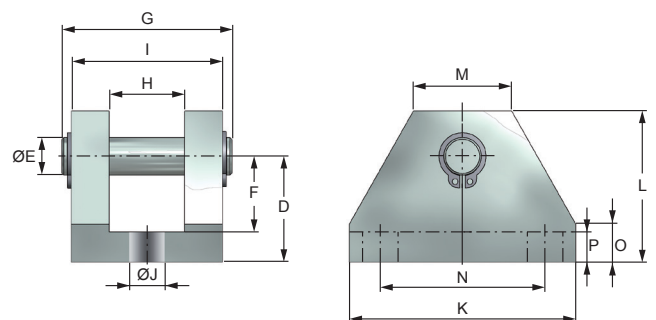
GW*	D	ØE	F	G	H	I
	mm	mm	mm	mm	mm	mm
M 24x2	100	25	50	50	25	132

## 4 Spherical end bearing (DIN 648, Series K, Series E on enquiry)



GW*	D	ØE	F	G	H	I	J	SW
	mm	mm	mm	mm	mm	mm	mm	mm
M 24x2	94	42	30	31	22	25	33,5	36

## 5 Clevis flange only use in combination with spherical end bearing (4)



GW*	D	ØE	F	G	H	I	J	SW	K	L	M	N	O	P
	mm	mm	mm	mm	mm	mm	mm	mm	mm	mm	mm	mm	mm	mm
M 24x2	45	25	33	70	32	65	13	-	90	65	40	70	20	12

Ordering Information	
<b>WM-ZG 7-100-K3G4-C</b>	
<b>WM</b>	Weforma
<b>ZG</b>	Deceleration cylinder with volume compensation of the piston rod
<b>7</b>	Diameter: 70 mm
<b>100</b>	Stroke: 100 mm
<b>K3</b>	Piston rod mounting: female rod clevis
<b>G4</b>	Housing mounting: spherical end bearing
<b>C</b>	Typ of deceleration : A= Push, B= Pull, C= Push and Pull

## Important information

### General Information

Shock absorber, deceleration cylinders and speed controls may under no circumstances be welded, painted or provided with clamps.



The products must be protected against contamination, fluids and air pressure. We offer special solutions for these applications. deceleration cylinder should be assembled only with the fixture indicated in the catalogue.

When deceleration cylinders are used parallel the size of the model and the used degree of hardness / used adjustment has to be the same. The load has to be distributed equally. Upon the occurrence of vibrations and oscillation a written release by Weforma is required.

If the absorption should be insufficient, please contact Weforma or the respective representation.. Deceleration cylinders of the WM-ZG series are adjustable over the whole deceleration range. A fixed stop must be set in the end positions 1 - 1,5 mm before the end of the stroke. Ausführung WM-ZG; with volume compensation, As a result of the adjustment, the total length can change up to 8 mm. Before opening deceleration cylinders of the WM-ZG series the pressure must be let off. Do not drive in the final position under full load.

### Adjustment:

Fixation of the piston rod in the extended position  
adjustment of the deceleration by  
turning the piston rod clockwise / counter clockwise  
soft deceleration = rotating counter-clockwise  
hard deceleration = rotating clockwise

Einbaulage: beliebig

