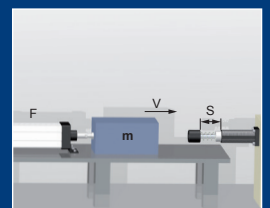


Deceleration cylinder

WM-Z 0,2



2D / 3D CAD
Download



Benefits

Mounting:

- Vertical with the piston rod down

Surface protection:

- Housing: Zinc Plated

Design:

- Flexibility relating to Stroke, Deceleration Characteristic
- Self-compensating within performance range

Temperature:

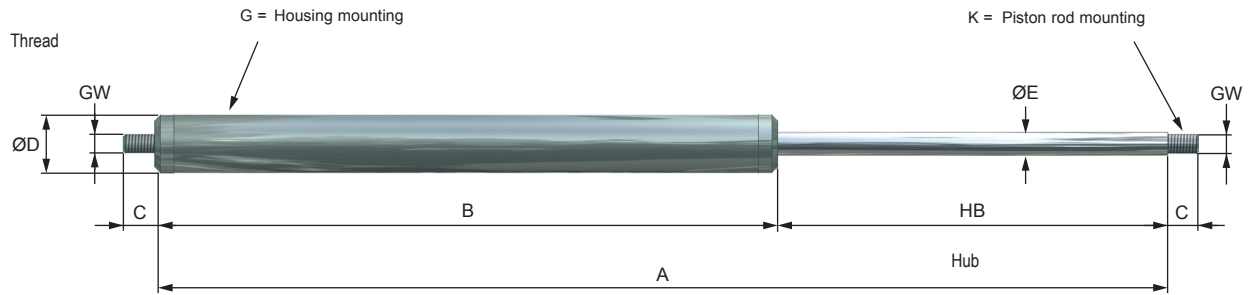
- Standard: -20°C - +80°C

RoHS - conform:

- Directive 2002/95/EC

Extended Life Time:

- Special Seals + Oils
- Piston rod: stainless steel

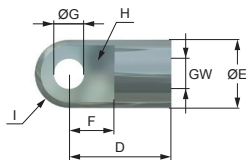


PERFORMANCE

	Stroke	Max. compression force	v max*			A	B	C	ØD	ØE	GW	Weight
			-2	-4	-6							
	mm	N	m/s	m/s	m/s	mm	mm	mm	mm	mm		g
WM-Z 0,2-10	10	60	0,4	0,25	0,1	41	31	3,5	6	2	M2	4
WM-Z 0,2-20	20	60	0,4	0,25	0,1	61	41	3,5	6	2	M2	6
WM-Z 0,2-30	30	60	0,4	0,25	0,1	81	51	3,5	6	2	M2	8
WM-Z 0,2-40	40	60	0,4	0,25	0,1	101	61	3,5	6	2	M2	10

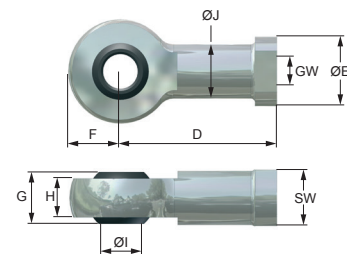
*Max. compression force st max. speed

1



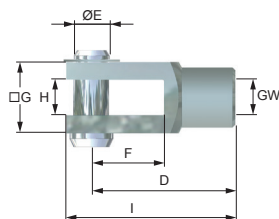
GW	D	ØE	F	G	H	I	J	SW
	mm	mm	mm	mm	mm	mm	mm	mm
M2	6	4	4	2,1	3	2	-	-

4



GW	D	ØE	F	G	H	I	J	SW
	mm	mm	mm	mm	mm	mm	mm	mm
M2	16	4,5	4,5	4,5	3,6	2	3,8	4

3



GW	D	ØE	F	G	H	I	J	SW
	mm	mm	mm	mm	mm	mm	mm	mm
M2	8	2	4	5,4	3,1	10	-	-

Ordering Information	
WM-Z 0,2-20-6-K3G1-C	
WM	Weforma
Z	Deceleration (Standard)
0,2	Size
20	Stroke: 20 mm
-6	Hardness Level
K3	Piston rod mounting: female rod clevis
G1	Housing mounting: male rod clevis
C	Typ of deceleration : C= Push und Pull

Important information

General Information

Shock absorber, deceleration cylinders and speed controls may under no circumstances be welded, painted or provided with clamps.



The products must be protected against contamination, fluids and air pressure. We offer special solutions for these applications. deceleration cylinder should be assembled only with the fixture indicated in the catalogue. When deceleration cylinders are used parallel the size of the model and the used degree of hardness / used adjustment has to be the same. The load has to be distributed equally. Upon the occurrence of vibrations and oscillation a written release by Weforma is required. A fixed stop must be set in the end positions 1 - 1,5 mm before the end of the stroke. 20% of the stroke without deceleration for the WM-Z series.

Setting:

The damping characteristics of the deceleration cylinders are fixed to the values specified in the performance table

The following hardness grades are available : -2 (soft) -4 (medium) and -6 (hard) intermediate values on enquiry.

Further hardness grades: on enquiry

Mounting: WM-Z vertical,
Deviation: +/-30 from the axis

