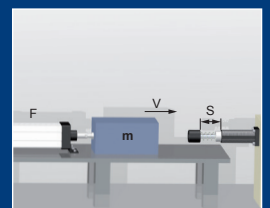


## Deceleration cylinder

WM-Z 7

2D / 3D CAD  
Download



## Benefits

### **Mounting:**

- Vertical with the piston rod down

### **Temperature:**

- Standard: -20°C - +80°C
- Low temperature: -50°C-...+60°C
- High temperature: 0°C-...+120°C

### **Surface protection:**

- Housing: Zinc Plated

### **RoHS - conform:**

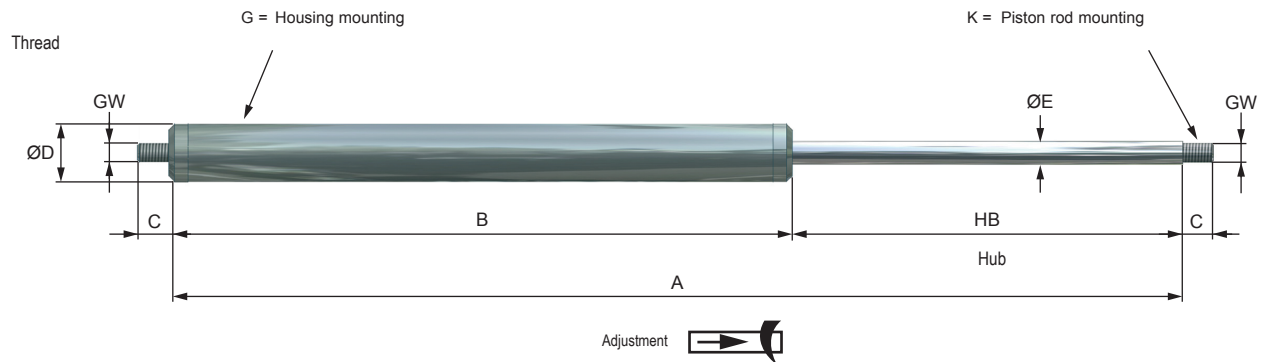
- Directive 2002/95/EC

### **Design:**

- Flexibility relating to Stroke, Deceleration Characteristic

### **Extended Life Time:**

- Special Seals + Oils
- Piston rod hard-chrome plated

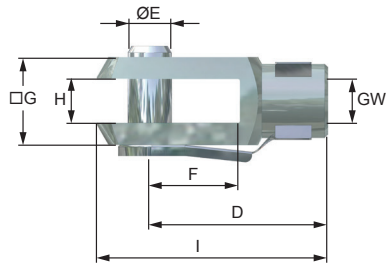


20% of the stroke without deceleration for the standard models (WM-Z).

## PERFORMANCE

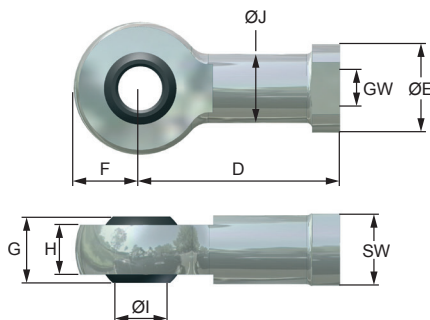
	Stroke	Max. compression force	Standard version Z					Weight
			A	B	C	ø D	ø E	(Z)
	mm	N	mm	mm	mm	mm	mm	kg
WM-Z 7-100	100	52000	320	220	35	70	28	M 24x2 4,5
WM-Z 7-200	200	52000	520	320	35	70	28	M 24x2 5,8
WM-Z 7-300	300	52000	720	420	35	70	28	M 24x2 7,1
WM-Z 7-400	400	52000	920	520	35	70	28	M 24x2 8,4
WM-Z 7-500	500	50000	1120	620	35	70	28	M 24x2 9,6

## 3 Female rod clevis (DIN 71752)



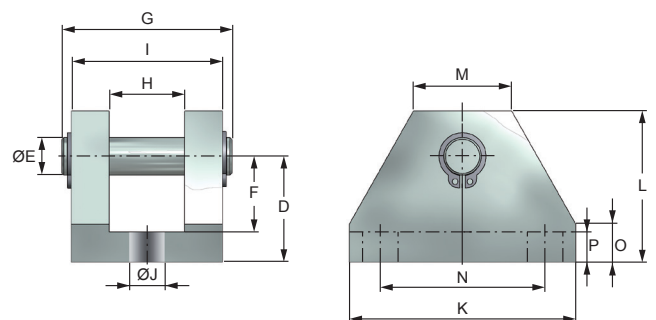
GW*	D	ØE	F	G	H	I
	mm	mm	mm	mm	mm	mm
M 24x2	100	25	50	50	25	132

## 4 Spherical end bearing (DIN 648, Series K, Series E on enquiry)



GW*	D	ØE	F	G	H	I	J	SW
	mm	mm	mm	mm	mm	mm	mm	mm
M 24x2	84	42	30	31	22	25	33,5	36

## 5 Clevis flange only use in combination with spherical end bearing (4)



GW*	D	ØE	F	G	H	I	J	SW	K	L	M	N	O	P
	mm	mm	mm	mm	mm	mm	mm	mm	mm	mm	mm	mm	mm	mm
M 24x2	45	25	33	70	32	65	13	-	90	65	40	70	20	12

Ordering Information	
<b>WM-Z 7-100-K3G4-C</b>	
<b>WM</b>	Weforma
<b>Z</b>	Deceleration cylinder (Standard)
<b>7</b>	Diameter: 70 mm
<b>100</b>	Stroke: 100 mm
<b>K3</b>	Piston rod mounting: female rod clevis
<b>G4</b>	Housing mounting: spherical end bearing
<b>C</b>	Typ of deceleration : A= Push, B= Pull, C= Push and Pull

## Important information

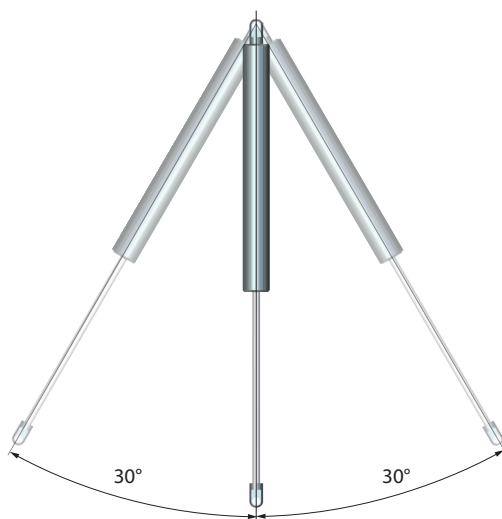
### General Information

Shock absorber, deceleration cylinders and speed controls may under no circumstances be welded, painted or provided with clamps.



The products must be protected against contamination, fluids and air pressure. We offer special solutions for these applications. deceleration cylinder should be assembled only with the fixture indicated in the catalogue. When deceleration cylinders are used parallel the size of the model and the used degree of hardness / used adjustment has to be the same. The load has to be distributed equally. Upon the occurrence of vibrations and oscillation a written release by Weforma is required. A fixed stop must be set in the end positions 1 - 1,5 mm before the end of the stroke. 20% of the stroke without deceleration for the WM-Z series.

Mounting: WM-Z vertical,  
Deviation: +/-30 from the axis



### Adjustment:

Fixation of the piston rod in the extended position adjustment of the deceleration by turning the piston rod clockwise / counter clockwise  
soft deceleration = rotating counter-clockwise  
hard deceleration = rotating clockwise

Further hardness grades: on enquiry

