

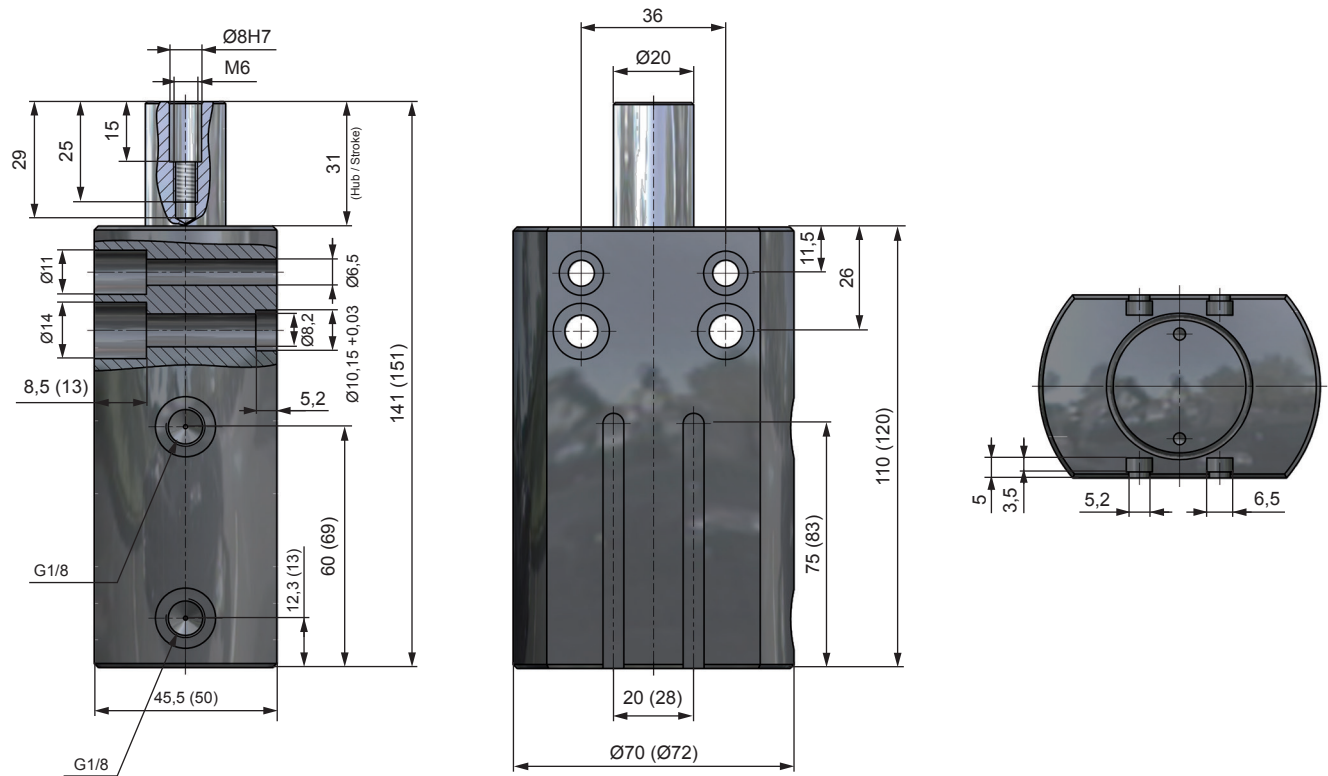
Positioning Cylinder

WPZ 40



ONLINE
2D / 3D CAD Download





PISTON FORCES

Working pressure (bar)	4	5	6	7	8
retract	380 N	475 N	656 N	660 N	755 N
extend	505 N	630 N	755 N	880 N	1010 N

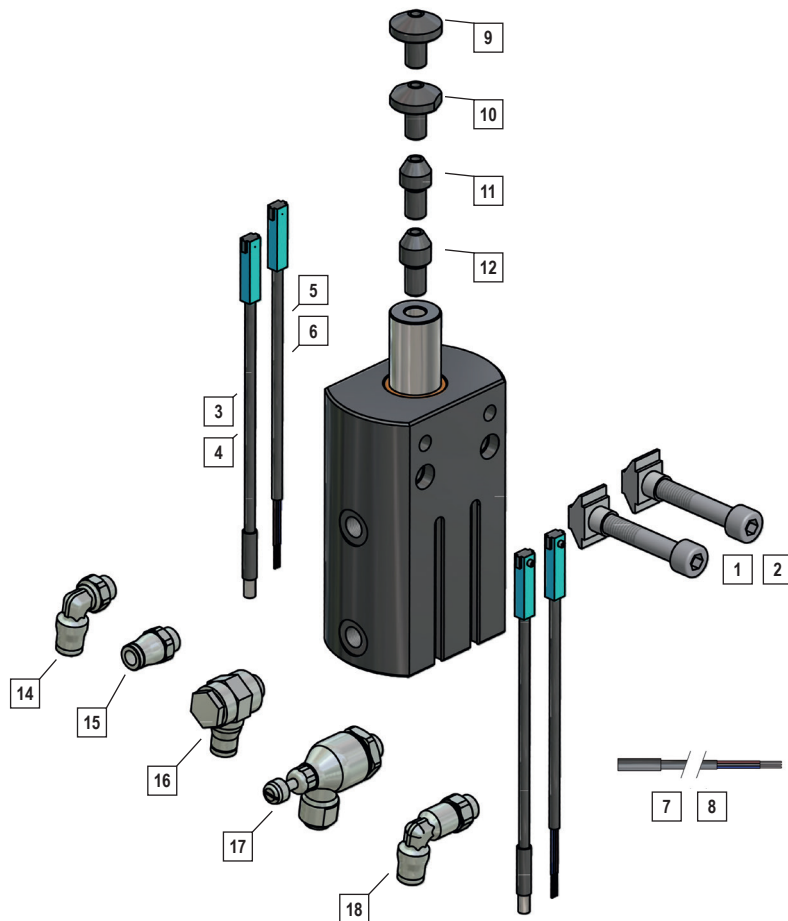
Benefits

- Exact positioning and lifting of pallets
- Interchangeable positioning bolts for different pallet systems
- Sensor for end position (optional)
- Special version: Positioning cylinder for clean room CL. 5 (ISO), CL. 100 (US), CL. 3 (VDI)
- RoHS compliant Directive 2002/95/EC

Technical Data

Working Pressure	4 - 8 bar
Air connection	G 1/8
Compressed Air	treated
Tube Diameter	6 - 8 mm
Weight	1,0 kg

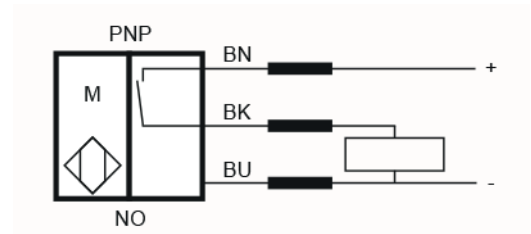
Accessories



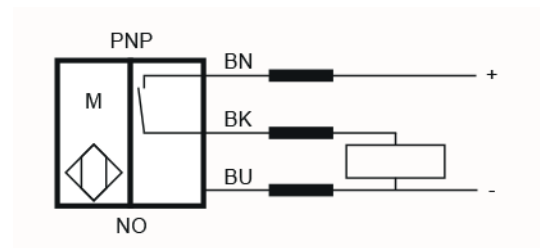
1	PZB32	Fastening set WPZ 32
2	PZB40	Fastening set WPZ 40
3	N 10	Sensor, inductiv, 2,5 m Kabel
4	N 11	Sensor, inductiv, 5 m Kabel
5	N 15	Sensor with plug, inductiv, Ø 8mm, 0,3 m Kabel
6	N 16	Sensor with knurled nut, inductiv, Ø 8mm, 0,3 m Kabel
7	KS 25	Cable with plug 2,5 m, Ø 8mm
8	KS 50	Cable with plug 5 m, Ø 8mm
9	PB10	positioning bolts PB10
10	PB11	positioning bolts PB11
11	PB12	positioning bolts PB12
12	PB13	positioning bolts PB13
14	VW1/8-6	G1/8-6 Stud elbow
14	VW1/8-8	G1/8-8 Stud elbow
15	VGR1/8-6	G1/8-6 Male stud
15	VGR1/8-8	G1/8-8 Male stud
16	VWS1/8-6	G1/8-6 Single banjo
16	VWS1/8-8	G1/8-8 Single banjo
17	VDR1/8-6	G1/8-6 Flow control regulator
17	VDR1/8-8	G1/8-8 Flow control regulator
18	VWL1/8-6	G1/8-6 Stud elbo, extended
18	VWL1/8-8	G1/8-8 Stud elbo, extended

Circuit diagram

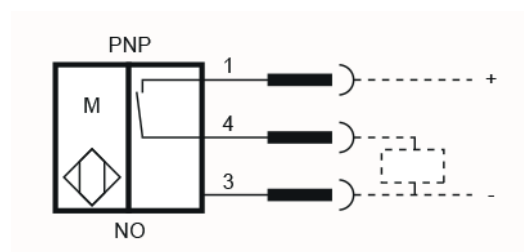
Proximity switch N10



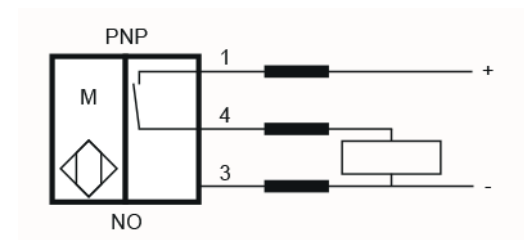
Proximity switch N11



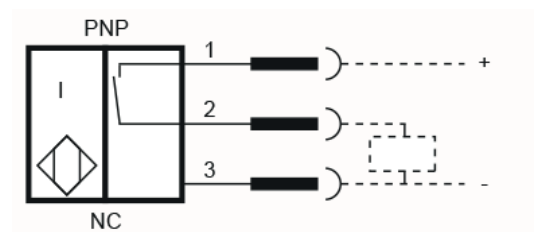
Proximity switch N15



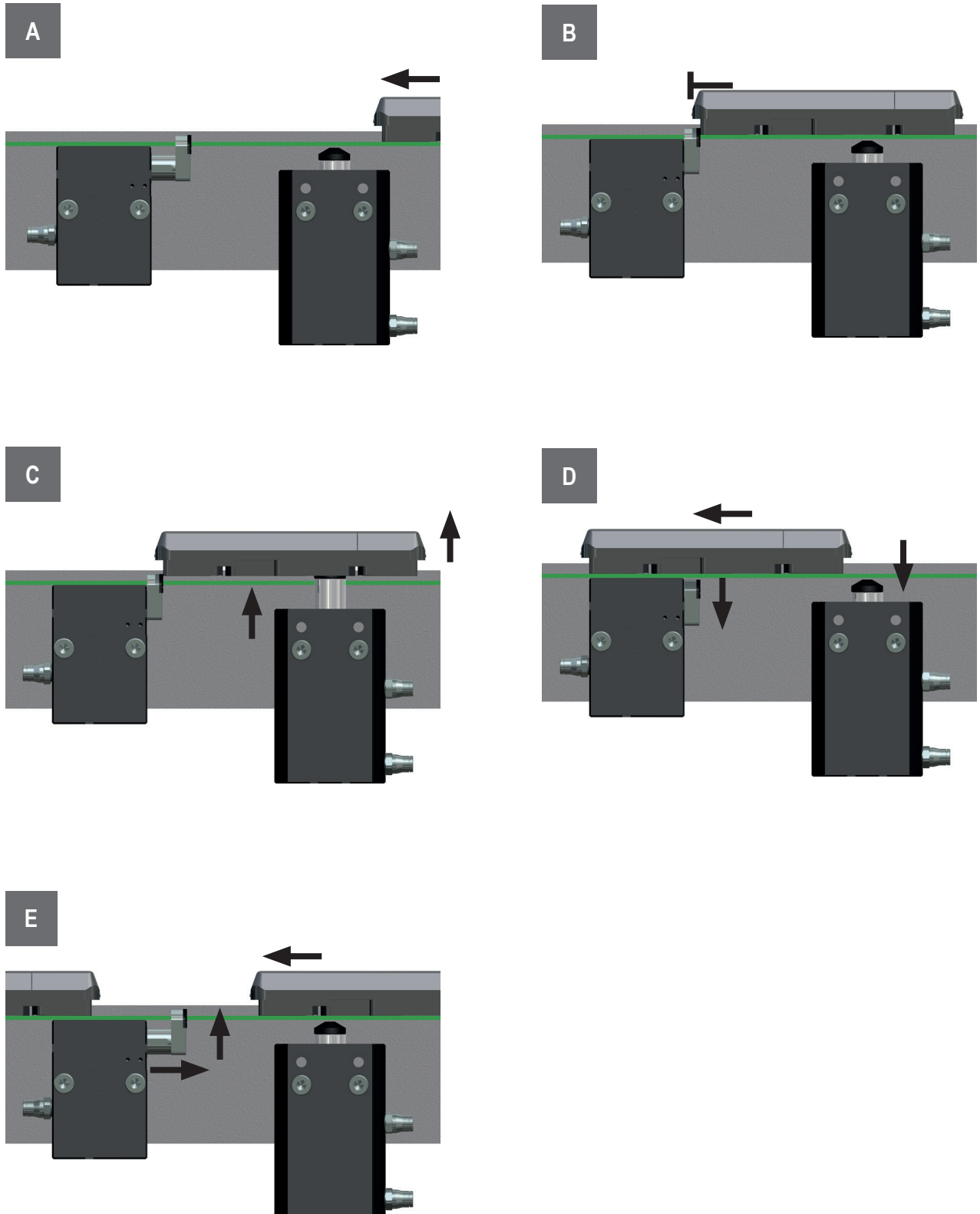
Proximity switch N16



Proximity switch N20



Working Principle



Safety Instructions

Attention

For all work on or with the Positioning Cylinder WPZ, the data sheet must be observed. The work must be performed by trained, skilled personal.

Electrical connections must be in accordance with VDE0100 or the relevant national regulations.

Repair and maintenance:

Electricity and compressed air must be shut down.

The work area is to prevent against accidentally switch on of electricity and compressed air.

Reference temperature for all technical information: 20°C

At a higher temperatures the energy absorption or torque is reduced.

Designated use

The positioning cylinder may only be used for the precise positioning of pallets.

They are not allowed to be used as end stops.

Liability - Guarantee

All warranty and liability claims expire at non-designated use.

This applies even if no original spare parts are used.

Environment protection

The replacement of worn parts must be paid to proper disposal.

Wearing parts and complete stopper can be sent to Weforma for free disposal.